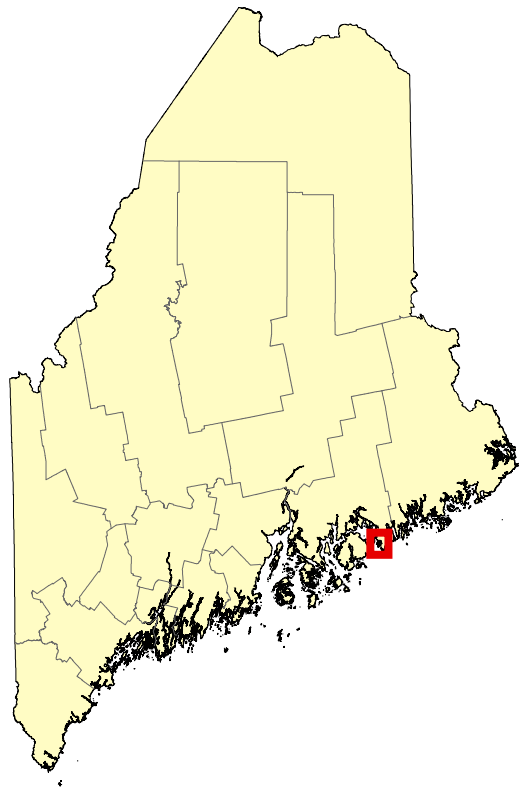


Beginning with Habitat (BwH)
equips Maine communities, landowners, and
conservation partners with tools to protect, restore, and
connect important habitats and ecosystems in a changing
climate.
www.beginningwithhabitat.org

High Value Plant & Animal Habitats Winter Harbor

This map is nonregulatory and is intended for planning purposes only



Town of Interest

Organized Towns

Developed

Impervious surfaces such as roads and buildings.

Rare or Endangered Wildlife*

Endangered, Threatened, or Special Concern Species

Mapped observations of rare wildlife species.

Roseate Tern, Piping Plover & Least Tern

Nesting, feeding, brood & rearing sites. Areas are identified based on species observations and confirmed habitat use.

Rare or Exemplary Plants and Natural Communities

Rare Plant Locations

Known rare, threatened, or endangered plant occurrences are based on field observations.

Rare and Exemplary Natural Communities

Mapped features are based on field surveys and aerial photo interpretation.

Significant Wildlife Habitat

Significant Vernal Pools

Surveyed pool depressions used for breeding by amphibians and other indicator species and that portion of the critical terrestrial habitat within 250 ft of the spring or fall high water mark.

Seabird Nesting Island

An island, ledge, or portion thereof in tidal waters with documented, nesting seabirds or suitable nesting habitat for endangered seabirds.

Deer Wintering Area

Forested area possibly used by deer for shelter during periods of deep snow and cold temperatures.

Inland Waterfowl and Wading Bird Habitats

Breeding, migrating/staging, or wintering areas for inland waterfowl or breeding, feeding, loafing, migrating, or roosting areas for wading birds.

Tidal Waterfowl and Wading Bird Habitats

Breeding, migrating/staging, or wintering areas for coastal waterfowl or breeding, feeding, loafing, migrating, or roosting areas for coastal wading birds.

Shorebird Areas

Shorebird feeding and roosting areas.

**Species and habitat labels are provided within and proximate to the town of interest.*

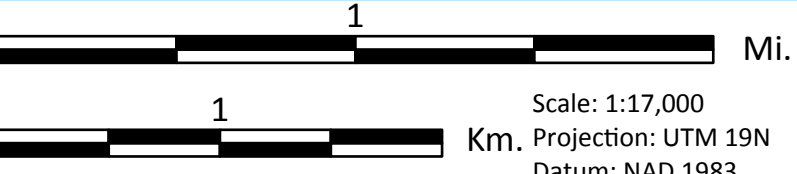
Contact the **Environmental Review** Team at the Maine Department of Inland Fisheries and Wildlife for information on fisheries, wildlife, and critical habitat resources related to potential development activities and regulatory processes. IFWEnvironmentalreview@maine.gov

TOWN BOUNDARIES - ME Office of GIS (2021)
HYDROLOGY - U.S. Geological Survey National Hydrography Dataset(2016)
DEVELOPED - NOAA Coastal Change Analysis Program (C-CAP) (2022)

RARE, ESSENTIAL & SIGNIFICANT WILDLIFE HABITATS - ME Office of GIS, ME Dep. of Inland Fisheries & Wildlife (2024)
RARE NATURAL COMMUNITIES & PLANTS - ME Natural Areas Pgrm (2024)



Map Prepared by
Maine Department of Inland
Fisheries & Wildlife
April 2025



Scale: 1:17,000
Kms, Projection: UTM 19N
Datum: NAD 1983